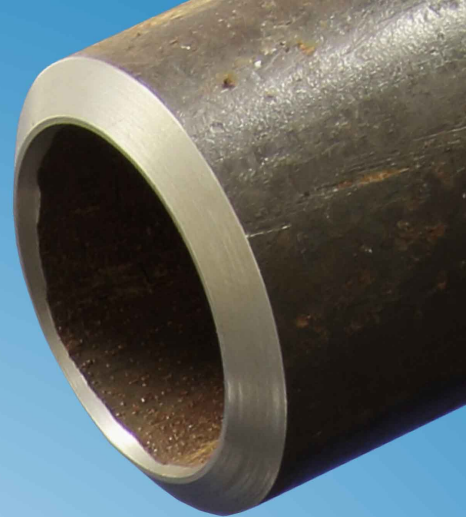


Battery and Electric Powered **MILLHOG**[®] Beveling Tools For Tube And Pipe



C-Hog Battery

- Range:
- .250" - 3.00"
 - 6.35mm - 76.2mm
- Weight:
- 23 lbs
 - 10.4 kg
- Minimum Clearance:
- 1.75"
 - 44.4mm
- Battery:
- Type, Li-ion
 - Voltage, 18 V
 - Capacity 5,2 Ah
- Battery Charger:
- 115V / 60Hz, or
 - 220 - 240V 50 - 60Hz



C-Hog Electric

- Range:
- .250" - 3.00"
 - 6.35mm - 76.2mm
- Weight:
- 22 lbs
 - 10 kg
- Minimum Clearance:
- 1.75"
 - 44.4mm
- Power:
- 120 volt 8.5 amps 50/60hz 950 watt, or
 - 220 - 240 volt 4.4 amps 50/60hz 950 watt



Ground Hog Battery

- Range:
- .500" - 2.25"
 - 12.7mm - 57.2mm
- Weight:
- 14.5 lbs
 - 6.6 kg
- Minimum Clearance:
- 1.5"
 - 38.1mm
- Battery:
- Type, Li-ion
 - Voltage, 18 V
 - Capacity 5,2 Ah
- Battery Charger:
- 115V / 60Hz, or
 - 220 - 240V 50 - 60Hz



Ground Hog Electric

- Range:
- .500" - 2.25"
 - 12.7mm - 57.2mm
- Weight:
- 13.5 lbs
 - 6.2 kg
- Minimum Clearance:
- 1.5"
 - 38.1mm
- Power:
- 120 volt 8.5 amps 50/60hz 950 watt, or
 - 220 - 240 volt 4.4 amps 50/60hz 950 watt

Battery and Electric Powered

MILLHOG[®]

Beveling Tools For Tube And Pipe



Mongoose Battery

- Range:
- .625" - 3.00"
 - 15.9mm - 76.2mm
- Weight:
- 17.5 lbs
 - 7.9 kg
- Minimum Clearance:
- 2.25"
 - 57.2mm
- Battery:
- Type, Li-ion
 - Voltage, 18 V
 - Capacity 5,2 Ah
- Battery Charger:
- 115V / 60Hz, or
 - 220 - 240V 50 - 60Hz



Mongoose Electric

- Range:
- .625" - 3.00"
 - 15.9mm - 76.2mm
- Weight:
- 16.5 lbs
 - 7.4 kg
- Minimum Clearance:
- 2.25"
 - 57.2mm
- Power:
- 120 volt 8.5 amps 50/60hz 950 watt, or
 - 220 - 240 volt 4.4 amps 50/60hz 950 watt



Tube Weasel Battery

- Range:
- .750" - 3.00"
 - 19mm - 76.2mm
- Weight:
- 22.5 lbs
 - 10.2 kg
- Minimum Clearance:
- 3"
 - 76.2mm
- Battery:
- Type, Li-ion
 - Voltage, 18 V
 - Capacity 5,2 Ah
- Battery Charger:
- 115V / 60Hz, or
 - 220 - 240V 50 - 60Hz



Tube Weasel Electric

- Range:
- .750" - 3.00"
 - 19mm - 76.2mm
- Weight:
- 22 lbs
 - 10 kg
- Minimum Clearance:
- 3"
 - 76.2mm
- Power:
- 120 volt 8.5 amps 50/60hz 950 watt, or
 - 220 - 240 volt 4.4 amps 50/60hz 950 watt